

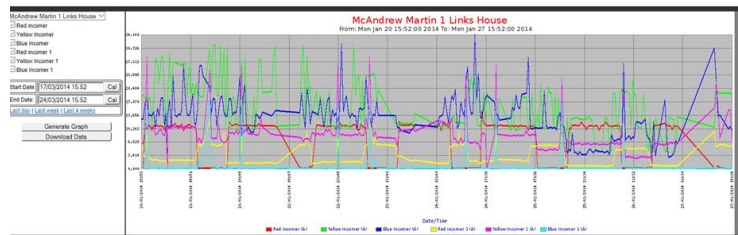
## MoD Bicester General and Emergency Lighting for 15,000 square metre logistic centre

McAndrewMartin were commissioned to investigate and propose a suitable low energy LED , long life replacement lighting scheme that also conforms to current standards and regulations in terms of operating lux levels.

This involved carrying out surveys of the existing building including lux levels during both day and night time hours of darkness

Prior to the scheduled replacement of the existing SON lights remote power monitoring equipment was installed to provide data of the electrical loadings on a 24 hour basis, as the building ran a mission critical 24-7 operation. This was repeated after the install to confirm the power and carbon emissions savings to be made in the future.

One of the major challenges was installing the new high bay lights at a height of 6 metres to produce lighting levels which met the guidelines for a warehouse lighting environment.



Selective positioning for all the lights was essential to avoid glare for forklift (reach truck) operators, and to provide for areas of task lighting. The installation of PIR sensors that activate the lights at this height was also something that had to be overcome.